

scale = 1/2 bust		
chest: 34"	hips: 39"	1 head unit: 8"
bust: 36"	height: 64"	coat length: 26"
scale: 18"		half back: 6 3/4"
waist: 27"	natural waist: 15"	

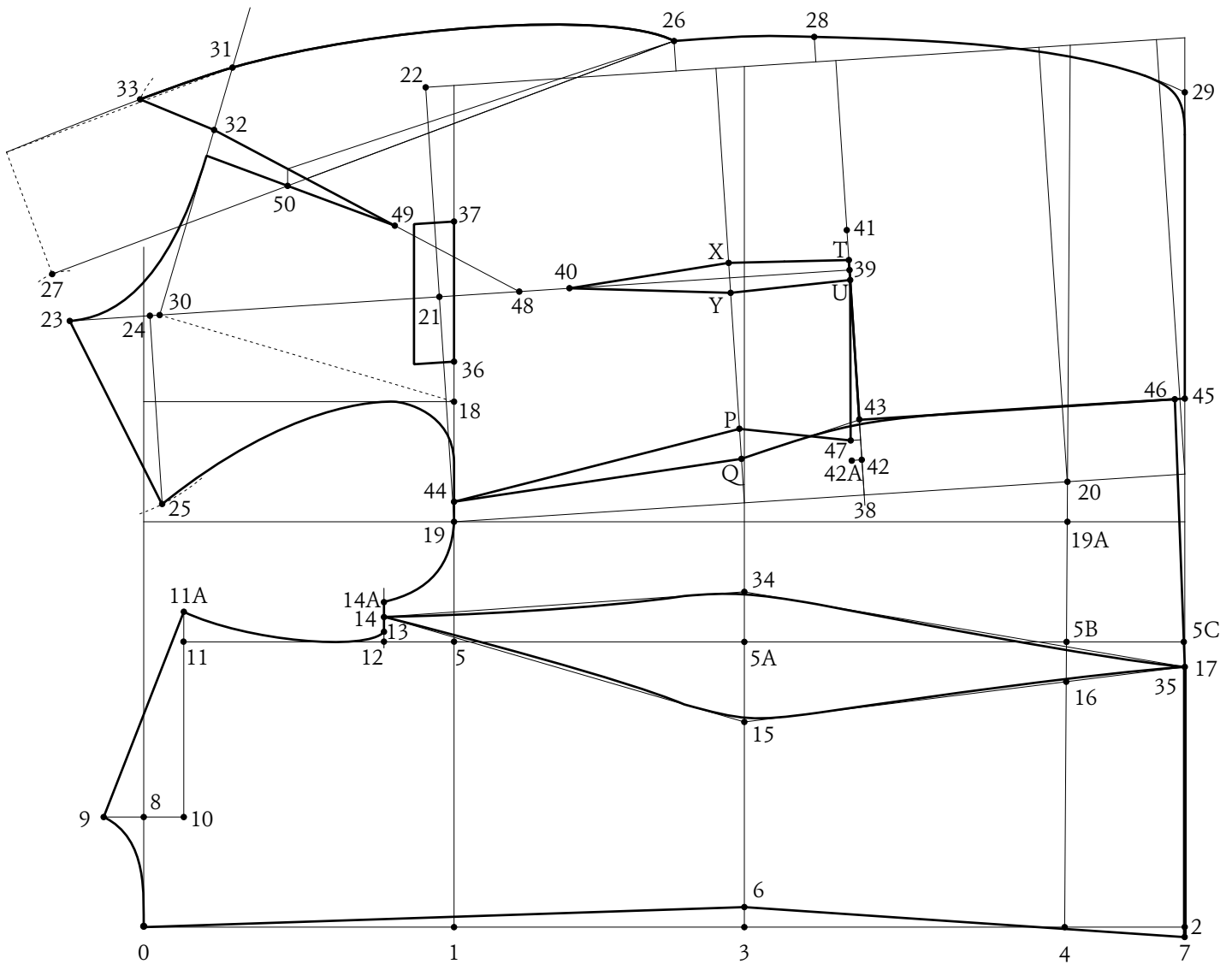


DIAGRAM LCT.01

- 1-0: 1/3rd plus 1 3/4 or 1 HU
- 2-0: 3 1/2 HU minus 2" (26")
- 3-0: 2 HU minus 1" (15")
- 4-3: 1 HU (8")
- 5-1: half back plus a (3/8") seam (7 1/8")
- 6-3: 1/2"
- 7-3: 1/4"
- 8-0: 1/6th scale minus 1/4"
- 9-8: 1" stand
- 10-9: 2" back shoulder angle
- 11-10: square across pt 10. Where pt 10 crosses the half back line is pt 11
- 11A-11: 3/4"
- Rule down to pt 5A on the waist line: pt 5B on the seat line and pt 5C on the hem line

- Join pt 9- pt 11A for the shoulder seam
- 12-5: 1 3/4" (Top of the side seam)
- 13-12: 1/4"
- 14-13: 3/8" seam step
- 14A-14: 3/8" seam step
- 15-5A: 2" back side seam waist suppression
- 16-5B: 1"
- 17-5C: 5/8"
- 18-5: 1/3rd scale
- 19-18: half pt18- pt5
- Square pt19 down to 19A on the seat line
- 20-19A: 1"
- Join pt20-pt19 and square off at 90 degrees, to the same for the waist, seat and hem line as shown in the diagram. These will become the new construction lines.
- 21-18: 1/8 scale plus 3/8"
- 22-1: half bust plus 3"
- Square pt22 off new chest line and rule down to hem line. (CFL)
- 23-21: pt1-0 plus 1/12th scale
- 24-23: 2" Front shoulder angle
- 25-23: equal to pt11A-9 minus 3/8"
- 26: 1" above the new waist line and 3/4" from the CFL
- 27-23: 1 1/4" stand
- 28-26: 3 1/2" button spacing and 5/8" from the CFL
- 29: Front angle is on the original hem line
- 30-23: 1/8th scale
- Join pt30 to Pt18 and square off at 90 degrees for gorge line.
- 31: 3 1/4" measured perpendicular to the break line.
- 32-31: 1 3/4" notch depth based on lapel width
- 33-32: 2" peak length
- 34: 1 1/4" side seam waist suppression
- 35-5C: 5/8"
- 36-18: 1" found on original chest line
- 37-36: 3 1/2 out breast width. Square pocket ends off new chest line.
- 38: cross pocket position is 1/2" below second button. Parallel to new waist line.
- 39: Rule down line 23-21 to pocket position
- 40-39: 7" dart length
- 41-39: 1" front of pocket
- 42-41: 5 3/4" pocket length
- 43-42: 1"
- 44-19: 1/2"
- 45: squared down from pt43 to hem line
- 46-45: 1/4"
- 47-43: 1/4" above pt43 and 1/2" beyond
- P&Q: 3/4" total dart suppression
- X&Y: 3/4" total dart suppression
- T&U: 1/2" total dart suppression at pocket mouth.
- 48-21: 2" join pt48 to pt32.
- 49: Measure back 2 1/2" from the break line. End of dart.
- 50: 1/2" total suppression on break line.
- Rule through pt50 as shown and join sew line of dart to top button as shown.

scale = 1/2 bust		
chest: 34"	hips: 39"	1 head unit: 8"
bust: 36"	height: 64"	coat length: 26"
scale: 18"		half back: 6 3/4"
waist: 27"	natural waist: 15"	

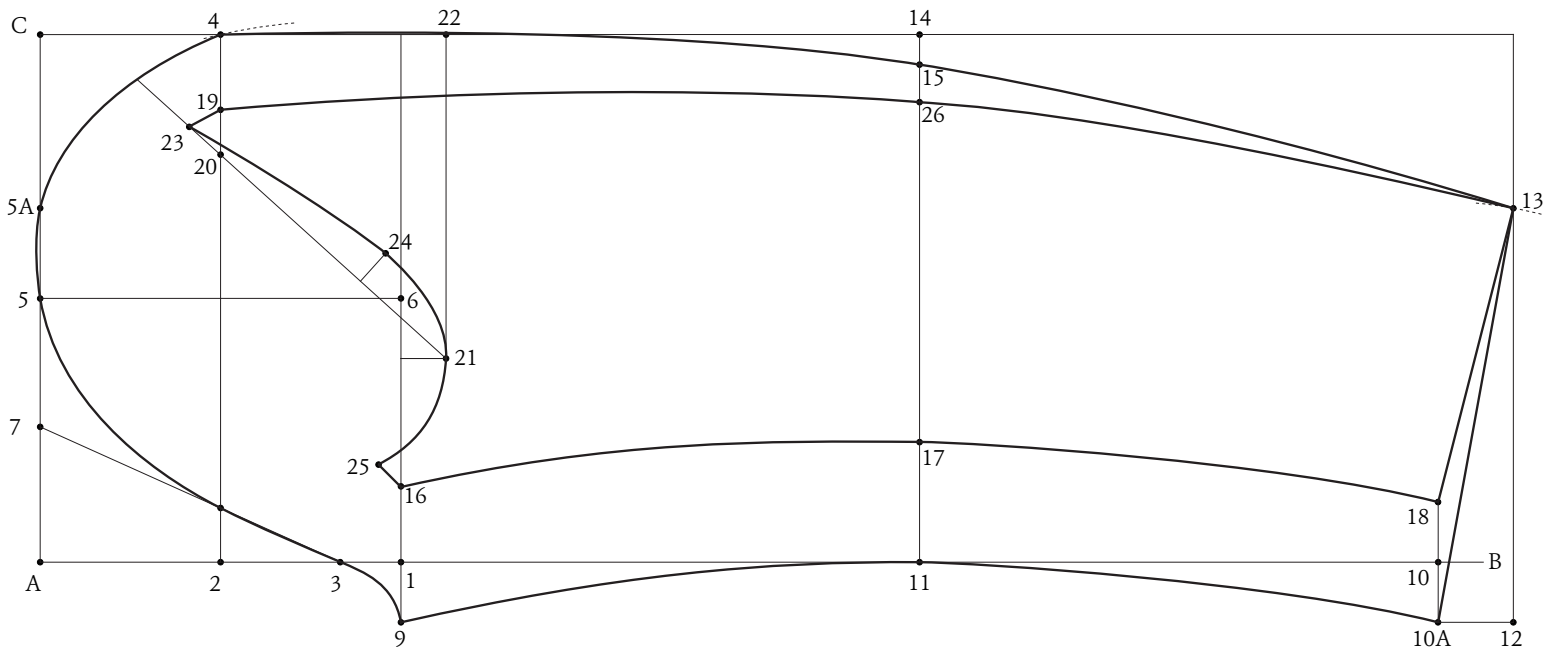


DIAGRAM LCT.02

Top sleeve

Square two perpendicular lines

A-B: 24"

1-A: 1/3rd scale

2-1: 1/6th Scale

3-1: 1"

4-3: 1/2 scale found on line 2

Square pt 4 up to C on line A and about 18" down

5-A: half A-C

5a-5: 1/12th scale towards pt C

6; squared down from 5 to line 1

7-A: 1/8th scale join 7-3

8: the intersection of line 7-3 on line 2-4

9-1: 1"

Join 3-8-5, 3-9 and 5a-4. Shape 5-5a 1/8th above the construction line.

10-1: two head units plus 1 1/4"

10a-10: 1"

11-1: half 1-10

Join 9-11-10a for the forearm seam

Line 12 is an 1 1/4" below line 10-10a

13-10a: 1/3rd scale plus 1"

14: is the intersection of line 11 & line 4

15-14: 1/2"

Join 13-15-4 for the hind arm seam

Top-sleeve completed

Under-sleeve

16-1: 1 1/4"

17-11: 2"

18-10: 1". Join 18-13

Join 16-17-18 for the forearm seam

19-4: 1 1/4"

20-19: 3/4". Seam step

21-6: 1" towards pt 1 and 3/4 below pt 6

Join 21-20

23: join pt 19 to line 21-20 and rule parallel to the sleeve cap

24-21: one third of line 23-21.

Hollow under-sleeve sleeve seam 5/8" at pt 24

Join 23-24-21

25-16: 3/8" above and 3/8" beyond pt 16

Join 25-21

26-15: 5/8"

Join 19-26-13 to complete the forearm seam

Under-sleeve completed